

Pioneer of Rubber Crawler Carriers



MOROOKA

MST130CR

360° Rotating Carrier

**360°
Rotation**

**13,000kg
Payload**



Largest loading capacity in its class!

*According to our research

- Maximum loading capacity: 13,000kg
- Electronic joystick control
- Wear-resistant steel plate
HARDOX dump body
- ROPS/FOPS Cabin

**ISUZU 6HK1XDEV
EU Stage V**

Significantly reduces emissions of PM (particulate matter) and NOx (nitrogen oxides), contributing to environmental protection.

Environmental performance

Adoption of the latest clean engine! "6HK1 made by ISUZU"

Equipped with a clean engine that meets the world's strictest Stage V standards.

"Auto decel function"

When the travel control lever, swing lever, etc. are placed in neutral for a certain period of time, the engine speed is automatically lowered.

This reduces excess fuel consumption and CO₂ emissions, and also reduces noise when the vehicle is stationary.



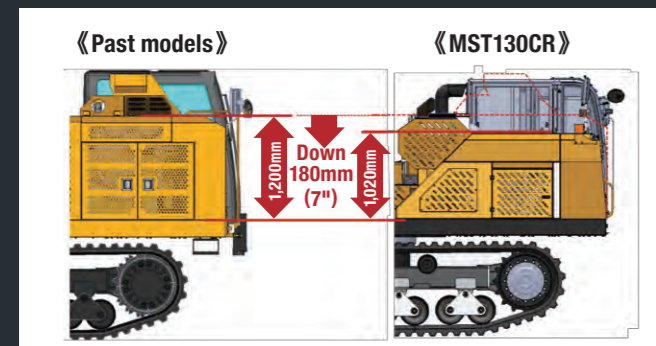
Improved functionality

Equipped with "anti-stall function"!

When the load on the engine becomes large, such as during loading, running uphill, or turning, the hydraulic equipment automatically senses the load and adjusts the flow rate to prevent engine stall.

Significant improvement at right side of machine visibility!

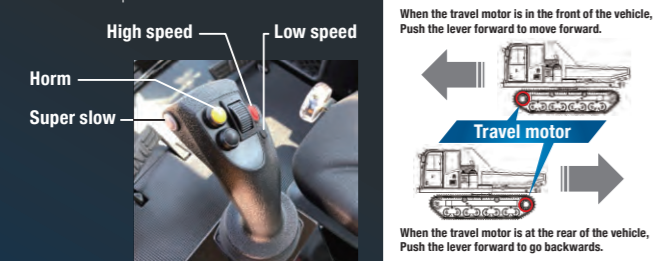
Compared to the similar model MST-2200VDR, the placement of the engine after-treatment device has been optimized to reduce the height of the engine cover. The area you can see directly has increased, allowing you to work more safely than before.



"Electronically controlled joystick lever"!

In conventional hydraulic pilot systems with two levers, the direction of lever movement and the vehicle's travel direction can vary depending on the position of the travel motor.

The new model detects the direction of the vehicle and always moves in the direction in which the lever is pushed, making it easier to operate.



Realizes comfortable driving operation



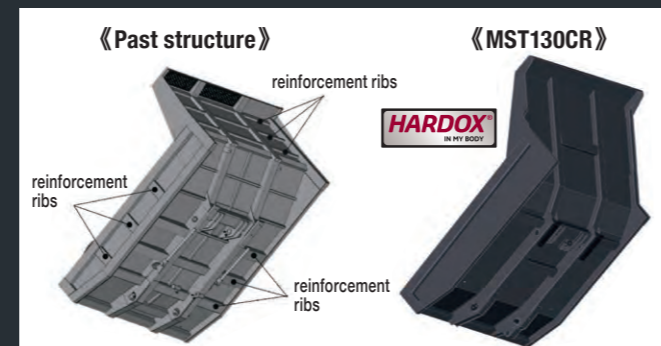
Largest loading capacity in its class

*According to our research

The dump bed now lasts even longer! (Comparison of our similar models)

Although the maximum loading capacity is 13 tons, one of the largest in its class, we have adopted a wear-resistant steel plate, HARDOX, at the front of the inside of the dump bed, and the structure of the dump bed has been revised from the ground up, greatly improving the durability of the dump bed.

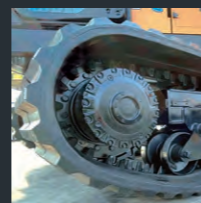
External damage caused by bucket claws is also reduced, contributing to lower running costs. In addition, it has been certified as "HARDOX IN MY BODY" by SSAB AB.



Increase of running speed

Following the proven HST system, the newly adopted hydraulic pump increases vehicle speed by 22% compared to the similar model MST-2200VDR.

This contributes to improving productivity.



"Multi-function switch"

The engine throttle and operation buttons, which were previously placed individually on the console, have been replaced with a "multi-function switch" that fits in the palm of your hand, making them easier to operate.



"Hold Grip"

A "hold grip" is equipped to support your body even when riding on uneven terrain.



"Super slow mode"

A "Super slow mode" allows you to drive with confidence when close to surrounding machinery during field work, when you need to make careful fine adjustments, such as when loading onto a truck or moving a vehicle to a pit.



MST130CR



Adoption of touch panel LCD monitor

The latest touch panel provides intuitive and easy-to-understand operation, and the screen is large and easy to read.

Improved safety and maintainability

ROPS/FOPS cabin

Equipped with ROPS and FOPS cabin to protect the driver's seat in the event of a fall, ensuring a safe work space for the operator.



3D 360 monitor

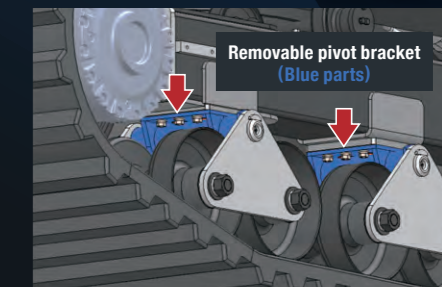
Omnidirectional cameras support the operator's blind spots, making work safer.



*Product image for illustration purposes only. Actual product may vary

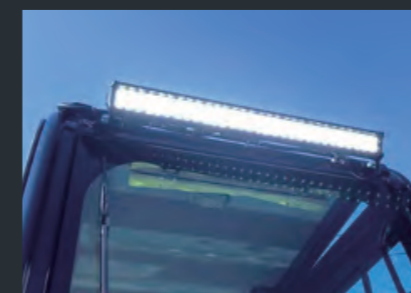
Improved replaceability of undercarriage parts!

The area around the pivot shaft in the undercarriage, which is susceptible to loads from the ground, has been made removable to make it easier to replace.



LED light

Equipped with an LED light with high illumination and long life. Visibility is improved even at night, making work safer.



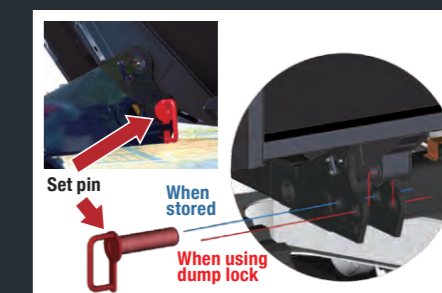
Lighter movable steps!

The movable aluminium step on the front of the vehicle, making it easier to set up.



New setting of dump lock pin

Locking structure of the dump lock has been changed from the conventional bar type to a pin type, and has been placed in an easily accessible position.



Equipped with overload prevention function

When the vehicle is stopped, press the "load measurement mode button" on the joystick, the loading platform will rise to a preset position, and the loaded mass will be estimated from the hydraulic pressure applied to the dump cylinder.

If the approximate result does not exceed the definite volume, "OK" will be displayed on the monitor, and if it has exceeded the definite volume, "OVER" and the approximate value of the measurement result will be displayed.

*The measurement results of this function are not compliant with the Measurement Law. This alerts the operator to overloading, and the measured value is only an estimate, so please use a truck scale for accurate measurements.



Monitor display (image)

Load measurement mode
Overload judgment
OK

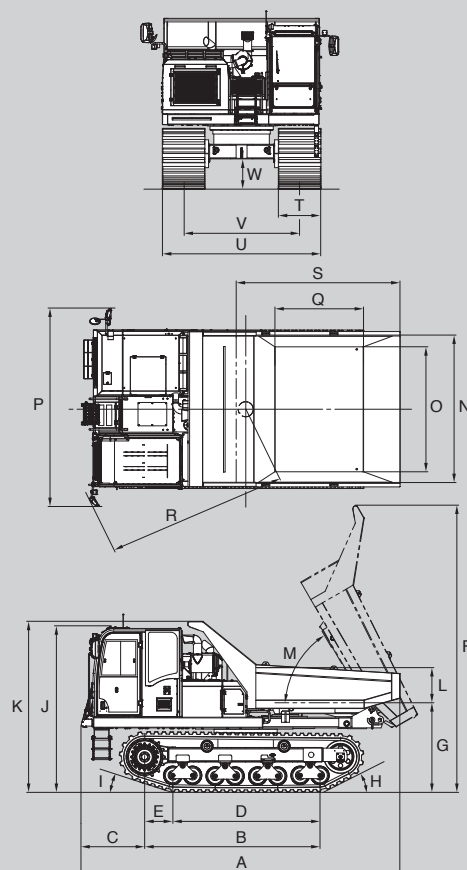
Load measurement mode
Overload judgment
OVER
15,000kg

Specifications

MODEL	MST130CR	
	IMPERIAL	METRIC
PERFORMANCE		
Maximum Payload	28,660 lbs	13,000 kg
Travel Speed (High/Low)	7.6 / 4.9 mph	12.2 / 7.9 km/h
Ground Pressure (Empty/Loaded)	5.2 / 9.4 psi	35.8 / 64.6 kPa
MACHINE DIMENSION & WEIGHT		
Operating Weight	35,715 lbs	16,200 kg
Overall Length	19' 8"	6,000 mm
Overall Width	9' 9"	2,980 mm
Overall Height	10' 8"	3,250 mm
Minimum Ground Clearance	22"	570 mm
Crawler Width	31"	800 mm
DUMP BODY		
Dump Shape	Scoop End	
Length x Width x Height (Inner)	10' x 9' x 2' 2"	3,080 x 2,750 x 660 mm
Dump Capacity (Struck/Heaped)	5.9 / 8.6 yd ³	4.5 / 6.6 m ³
ENGINE		
Name	ISUZU 6HK1XDEV	
Nominal Output	286 HP / 1,900 rpm	210 kW / 1,900 rpm
FUEL USED		
	Diesel	
TANK CAPACITY		
Fuel Tank Capacity	101.5 gal (US)	384 ℓ
Hydraulic Oil Tank Capacity	41.7 gal (US)	158 ℓ
DEF Tank Capacity	10.6 gal (US)	40 ℓ
Emission Standard	EU Stage V	

● Specifications are subject to modify without notice

Dimensions



A	6,000 mm	19' 8"	M	60°	
B	3,685 mm	12' 1"	N	(Inside dimension)	2,750 mm 8' 5"
C	1,190 mm	3' 11"	O	2,350 mm	7' 9"
D	2,770 mm	9' 1"	P	3,275 mm	10' 9"
E	540 mm	21"	Q	1,665 mm	5' 6"
F	5,400 mm	17' 9"	R	3,330 mm	10' 11"
G	1,685 mm	5' 6"	S	(Inside dimension)	3,080 mm 10' 1"
H	45°		T	800 mm	31"
I	26°		U	2,980 mm	9' 9"
J	3,150 mm	10' 4"	V	2,180 mm	7' 2"
K	3,250 mm	10' 8"	W	570 mm	22"
L	(Inside dimension)	660 mm 26"			

MOROOKA
Morooka Co., Ltd.



URL: www.morooka.com (English) www.morooka.co.jp (Japanese)
Postal Code : 301-0031
358 Shoubeeshindenmachi, Ryugasaki city, Ibaraki Prefecture, Japan
TEL : +81-297-66-2111 TEL : (Overseas Sales Dept.) : +81-297-86-9034

CONTACT